



A Poly Wallets Heavy-duty translucent wallet expands and has a sturdy black cloth gusset and trim. Protective flap with elastic cord closure for easy transport. Repels moisture and has two clear pockets on front with index card insert included. Archival quality. PVC free.

ID No.	Size	Expansion	Color	Qty.	Unit	Price
1 SMD-71953	★ Letter	2¼"	Translucent Blue	1	EA	11.76
2 SMD-71951	★ Letter	2¼"	Translucent Green	1	EA	11.76
3 SMD-71952	★ Letter	2¼"	Translucent Purple	1	EA	11.76

★ Acid Free.



B 12-Pocket Poly Expanding File Stylish yet professional embossed pattern. Fully expanding bottom allows you to load with files. Stands freely on a desk to allow easy access to contents. Durable poly material resists tears and repels moisture. Includes colored and white customizable tab inserts and a protective flap secured by an elastic cord and button closure. Acid free, PVC free. Archival quality.

ID No.	Size	Color	Pockets	Qty.	Unit	Price
4 SMD-70863	Letter 13" × 9½"	Black/Blue	12	1	EA	12.25



C Spiral Poly Expanding File Polypropylene is wear, tear and moisture-resistant to protect your documents. Spiral flap stays out of the way for easy access. Unique expanding bottom slides out to 4" wide for more holding capacity. Secure elastic cord closure. ♻️ ♻️

ID No.	Size	Color	Pockets	Qty.	Unit	Price
5 ESS-01119	★ 13¼" × 10½"	Navy Blue	13	1	EA	24.25
6 ESS-01121	★ 13¼" × 10½"	Smoke	13	1	EA	24.25

★ Contains 55% post-consumer recycled content; 55% total recycled content.



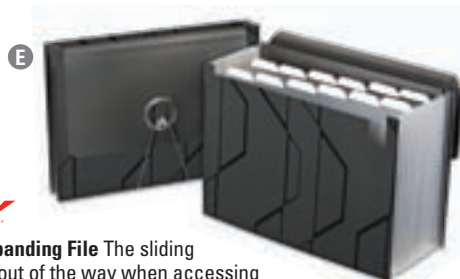
D Jumbo 13-Pocket File Tabbed pocket file expands a full 12" at top and bottom. Stands upright for desktop use. Textured polypropylene is wear-, tear- and moisture-resistant. Full flap with elastic cord closure. Includes 12 color-coded and alpha index tabs.

ID No.	Size	Color	Index	Pockets	Qty.	Unit	Price
7 ESS-82013	Letter 13¼" × 9½"	Black	A-Z; Color	13	1	EA	28.65



E Sliding Cover Expanding File The sliding cover keeps the flap out of the way when accessing documents. Expanding bottom allows additional capacity as well as the ability to stand up on your desktop. Full flap with elastic closure. Includes blank white self-adhesive labels. Super durable poly construction is wear-, tear- and moisture-resistant.

ID No.	Size	Pockets	Expansion	Color	Qty.	Unit	Price
8 ESS-02327	Letter 9½" × 13¾"	13	4"	Black	1	EA	17.99



F Poly Expanding File Locate, organize and protect documents with this durable expanding file. Polypropylene construction is waterproof and tear-resistant. Full cover flap and unique elastic closure keep content secure. 13 pockets.

ID No.	Size	Pockets	Expansion	Color	Qty.	Unit	Price
9 GLW-39624	★ Letter 9" × 13"	13	1½"	Assorted	1	EA	8.99

★ Charcoal; Flame; Lime; Navy.



G Expandable Poly Pocket File Locate, organize and protect documents with this durable expanding file. Polypropylene construction is waterproof and tear-resistant. Full cover flap and unique elastic closure keep content secure. 7 pockets.

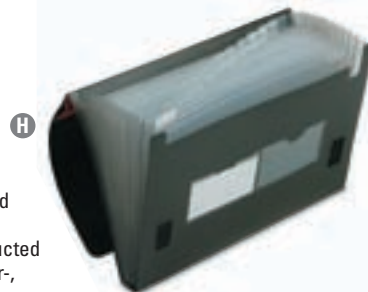
ID No.	Size	Pockets	Expansion	Color	Qty.	Unit	Price
10 GLW-55633	★ 9" × 13"	7	¾"	Assorted	1	EA	7.99

★ Charcoal; Flame; Lime; Navy.



H 13-Pocket File Organize and protect documents with this durable expanding file. Constructed of polypropylene which is wear-, tear- and moisture-resistant.

ID No.	Size	Color	Index	Pockets	Qty.	Unit	Price
11 ESS-82011	Letter 13" × 9½"	Black	A-Z; Blank	13	1	EA	19.46



Contains At Least 10% Total Recycled Content



Meets the Recovered Materials Content Ranges Specified by the EPA through the Comprehensive Procurement Guideline (CPG)